

# CCNP Study Aids:

Shade Trees that May Appear on the CCNP exam.

These materials were donated by the author to the CNGA in recognition of scholarships given by the Colorado Nursery Research and Education Foundation (CNREF) in support of students at FRCC.

**If you find these materials helpful, please donate to CNREF today!**

Non-exclusive use of the following photos/materials is hereby granted to the Colorado Nursery & Greenhouse Association for use by individuals seeking Certification as a Colorado Certified Nursery Professional. The Author reserves all rights to these Images/Materials. Users of this presentation do not acquire any copyright, ownership or equivalent rights in or to any Images. Users must contact the Author if they wish to use any of these photos for other purposes.

## Author:

Ray Daugherty, CCNP No. 369,

Horticulture & Landscape Technologies Faculty, Front Range Community College  
rdaugh4908@aol.com or Tel. 303-246-4414.

Keith A Williamson, CCNP No. 115 (2013 New Mexico supplement)

*Acer xfreemanii*  
(AY-sir free-MAN-ee)  
Freeman Maple



*Acer negundo*

(AY-sir nuh-GOON-doe)

Box Elder



*Acer platanoides*

(AY-sir plat-an-OY-deez)

Norway Maple





© Ray Daugherty

*Aesculus glabra*  
(ESS-kew-lus GLAB-rah)  
Ohio Buckeye

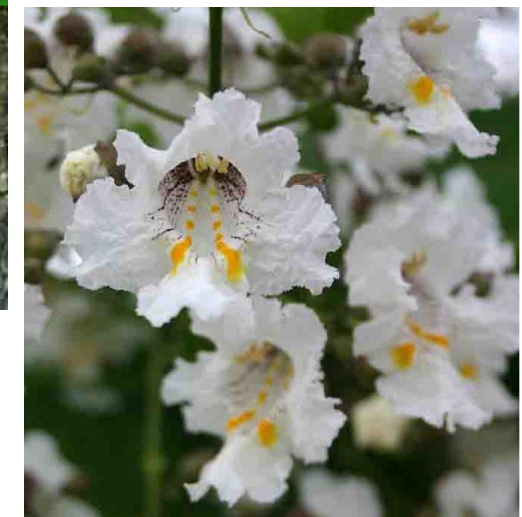




*Catalpa speciosa*

(kah-TAL-pah spee-see-OH-sah)

Western or Northern Catalpa,



© Ray Daugherty

*Celtis occidentalis*

(KELT-us ox-uh-den-TAL-us)

Western or Common Hackberry





© Ray Daugherty



*Cladrastis kentuckea*  
(kla-DRAS-tis ken-TUCK-ee-a)  
Kentucky Yellowwood

*Fraxinus americana*

(FRAX-in-us ah-mer-ih-KAY-nah)

White Ash



*Fraxinus angustifolia* subsp. *oxycarpa* 'Raywood'  
(FRAX-in-us an-gus-ti-FO-lee-a ox-ee-CAR-pa)  
Raywood Narrowleaf Ash

*Fraxinus nigra*  
(FRAX-in-us NIGH-gra)  
Fall Gold or Black Ash



© Keith A Williamson



*Fraxinus pennsylvanica*

(FRAX-in-us penn-sill-VAN-i-ca)

Green Ash



© Ray Daugherty

*Fraxinus velutina*

(FRAX-in-us ve-lew-TEE-na)

Velvet, Arizona, or Modesto Ash

*Gleditsia triacanthos inermis* cultivars  
(gluh-DIT-see-uh try-uh-KAN-thos ih-NER-mis)  
Honeylocust





© Ray Daugherty

*Gymnocladus dioica*

(jim-NO-clad-us dye-oh-EYE-kus)

Kentucky Coffeetree



© Ray Daugherty

*Juglans nigra*  
(JOO-glans NIGH-gra)  
Walnut, Black





© Ray Daugherty

*Juglans regia*  
(JOO-glans REH-gee-a)  
English Walnut



*Maclura pomifera*

(ma-KLOO-ra pom-I-fe-ra)

Osage Orange

*Morus alba* Mapleleaf  
(MORE-us AL-bah)  
Mapleleaf Fruitless Mulberry

*Pistachia chinensis*

(pis-TAH-kee-a chi-NEN-sis)

Chinese Pistache

*Platanus* spp.  
(PLAT-an-us)  
Sycamore/Planetree



*Populus xacuminata*  
(POP-yew-lus a-kew-min-ah-tah)  
Cottonwood, Lanceleaf





© Ray Daugherty

*Populus angustifolia*  
(POP-yew-lus an-GUST-i-fo-ly-ah)  
Narrowleaf Cottonwood



© Ray Daugherty

*Populus fremontii*

(POP-yew-lus free-MONT-ee-ee)

Fremont Cottonwood

*Populus sargentii* (*P. deltoides* ssp. *monilifera*)

(POP-yew-lus sar-JENT-ee-i)

Cottonwood, Plains





© Ray Daugherty

*Populus simonii*

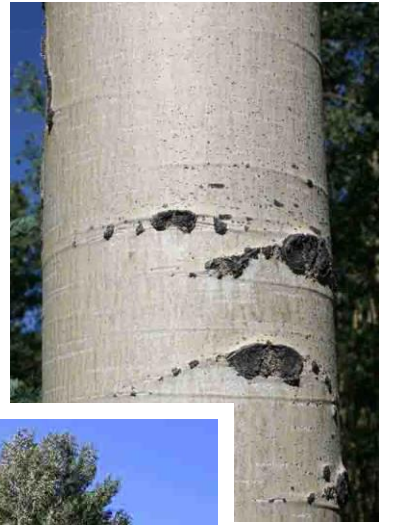
(POP-yew-lus si-MON-ee-ee)

Simon or Santa Fe Cottonwood

*Populus tremuloides*

(POP-yew-lus trem-yew-LOY-deez)

Aspen



*Prosopis glandulosa*

(pro-SO-pis glan-dew-LO-sa)

Honey Mesquite

*Quercus bicolor*  
(KWER-kus BYE-color)  
Swamp White Oak



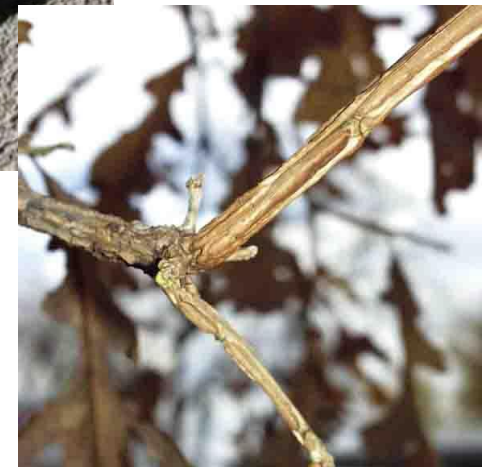


© Ray Daugherty

*Quercus buckleyi*  
(KWER-kus BUK-lee-eye)  
Texas Red Oak, Buckley Oak

*Quercus macrocarpa*  
(KWER-kus mak-roe-KAR-pah)  
Bur Oak





© Ray Daugherty

*Quercus muehlenbergii*  
(KWER-kus mew-len-BERG-ee-eye)  
Chinkapin Oak





*Quercus robur*  
(KWER-kus ROW-burr)  
English Oak





© Ray Daugherty

*Quercus shumardii*  
(KWER-kus shoe-MAR-dee-ee)  
Shumard's Oak





© Keith A Williamson



*Quercus virginiana*

(KWER-kus vir-jin-ee-AH-na)

Live Oak, Southern Live Oak



*Salix alba* 'Tristis' (syn. *S. sepulcralis* 'Chrysocoma')  
(SAY-lix AL-bah Tris-TISS)  
Willow, Weeping Golden



© Ray Daugherty

*Salix alba vitellina*

(SAY-lix AL-bah vih-tell-EEN-uh)

Willow, Russian Golden



© Ray Daugherty

*Salix blanda* (*S. ×pendulina*)

(SAY-lix BLAN-da)

Willow, Wisconsin Weeping

*Salix matsudana* 'Umbraculifera'

(SAY-lix mat-zoo-DON-nuh Um-BRACK-yew-luh-fair-uh)

Willow, Globe





© Ray Daugherty

*Tilia americana*

(TILL-ee-uh ah-mer-ih-KAY-nah)

Linden, American



© Ray Daugherty

*Tilia cordata*

(TILL-ee-uh core-DAY-tuh)

Linden, Littleleaf





© Ray Daugherty

*Tilia tomentosa* cultivars  
(TILL-ee-uh toe-men-TOE-sa)  
Silver Linden



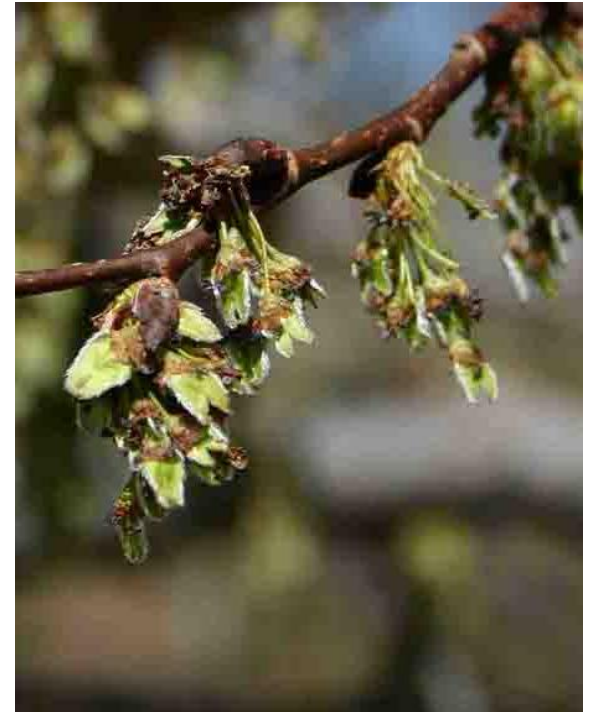


© Keith A Williamson



*Ulmus* cultivars  
(UL-mus)  
Elm





© Ray Daugherty

*Zelkova serrata* cultivars  
(zel-KO-va ser-AH-ta)  
Japanese Zelkova





© Keith A Williamson

